

LVL Formwork Solutions

ultralamTM
LVL Formwork Solutions



Modern Lumber Technology Ltd. is one of the biggest Forest owners in the Tver region of North West of Russia with annual logging of 1 500 000 m³. All forestry and chain of custody is FSC certified which proves MLT's responsibility towards Russian flora and fauna and it's preservation for future generations.

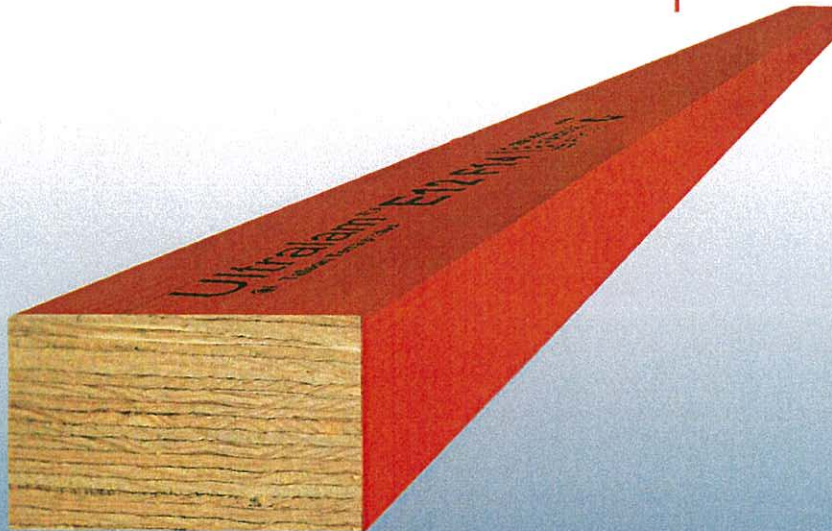
Ultralam LVL formwork beams are produced from the strongest slow-growing softwood lumber of North-West of Russia with Finnish E0 phenolic glue and high-tech American water resistant orange coating is certified and 3rd party audited by Australian SAI Global according to AS/NZS 4357.



The strongest slow-growing softwood
lumber out of Russian North-West Forests

Ecofriendly with best bonding characteristics
phenolformaldehyde glue from Finland

The best water resistant coating from USA

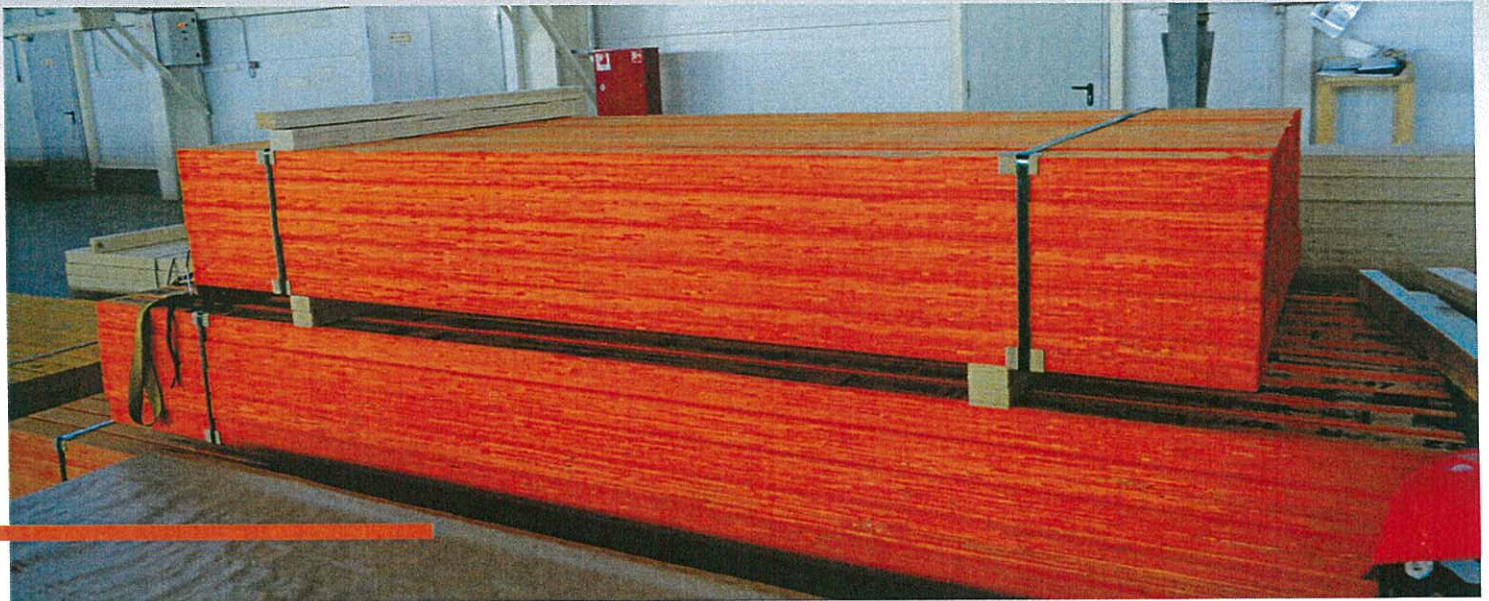
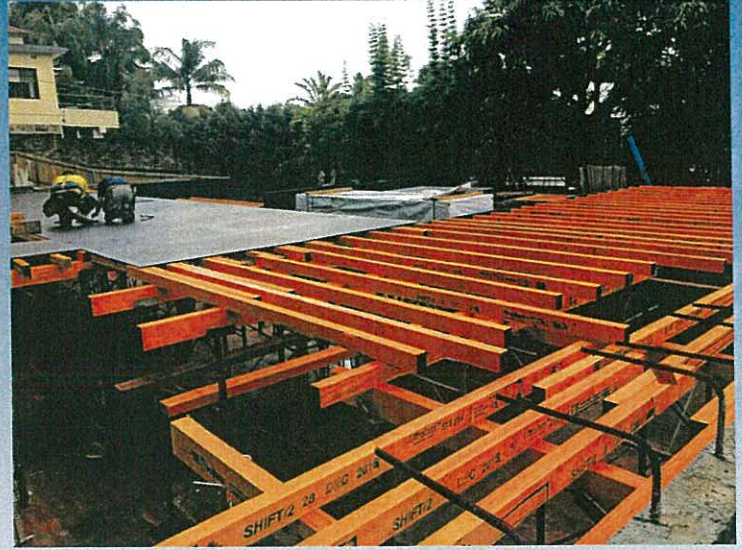


The best wood processing machinery
from Germany

Strict quality control and 3rd party
audit from SAI Global, Australia

SUITABLE APPLICATIONS:

Formwork bearers and Joists
Soldiers and Walers



SPECIFICATION:

Veneer:

Species – Norway Spruce
and Scotch pine
Thickness – 3.2mm

Joints:

face and core scarfed veneers

Glue:

Phenolformaldehyde

Bond:

Type A (Marine) AS/NZS 2098
and AS/2754

Density:

560 kg/m³

Additional processing:

arrised edges and orange
water resistant coating

ULTRALAM LVL FORMWORK BEAMS PRODUCTS

CROSS SECTION DXB (MM)	MASS KG/M	PIECES PER PACK
45X95	2,4	11X7 (77)
63X95	3,35	11X5 (55)
75X130	5,46	9X2 (18)
75X150	6,3	8X2 (16)



Density/Tolerances
560 kg/m³

Thickness
-0/+4 mm

Length
-0/+10 mm

Width
0/+2 mm

The tabular data and standard design in present publication have been prepared in accordance with AS 3610-1995 dd. January 2003, rev.1 and AS 1720.1-2010 Australian Standard for Timber Structures Part 1: Design Methods, dd. August 2015, rev.3

ULTRALAM E12 CONCRETE FORMWORK JOIST SPAN TABLES

Table 1 below is for Ultralam E12 joists supporting concrete formwork with a deflection criteria of Class III (span/270)

Concrete slab thickness (mm)	Ultralam E12 Member size (mm)	Ultralam E12 Joist Spacing (mm)						Ultralam E12 Joist Spacing (mm)					
		225	300	400	450	480	600	225	300	400	450	480	600
		Ultralam E12 Maximum Single Span (m)						Ultralam E12 Maximum Continuous Span (m)					
100	95 x 45	1.95	1.75	1.60	1.50	1.50	1.40	2.40	2.15	1.95	1.90	1.80	1.65
	95 x 47	1.95	1.80	1.60	1.55	1.50	1.40	2.45	2.20	2.00	1.90	1.85	1.65
	95 x 63	2.15	1.95	1.80	1.70	1.65	1.55	2.70	2.45	2.20	2.10	2.10	1.90
	95 x 65	2.20	2.00	1.80	1.75	1.70	1.55	2.70	2.45	2.25	2.15	2.10	1.95
	130 x 75	3.15	2.85	2.60	2.50	2.45	2.25	3.90	3.55	3.20	3.10	3.05	2.80
	130 x 77	3.20	2.90	2.60	2.50	2.45	2.30	3.95	3.60	3.25	3.10	3.05	2.85
	150 x 75	3.65	3.30	3.00	2.90	2.80	2.60	4.50	4.10	3.70	3.60	3.50	3.25
	150 x 77	3.70	3.35	3.05	2.90	2.85	2.65	4.55	4.15	3.75	3.60	3.55	3.30
150	95 x 45	1.80	1.65	1.50	1.45	1.40	1.30	2.25	2.05	1.85	1.75	1.70	1.50
	95 x 47	1.85	1.70	1.50	1.45	1.45	1.30	2.30	2.10	1.90	1.80	1.75	1.55
	95 x 63	2.05	1.85	1.70	1.60	1.60	1.45	2.55	2.30	2.10	2.00	1.95	1.80
	95 x 65	2.05	1.85	1.70	1.65	1.60	1.50	2.55	2.35	2.10	2.05	2.00	1.85
	130 x 75	3.00	2.70	2.45	2.35	2.30	2.15	3.70	3.35	3.05	2.95	2.85	2.65
	130 x 77	3.00	2.75	2.50	2.40	2.35	2.15	3.75	3.40	3.05	2.95	2.90	2.70
	150 x 75	3.45	3.15	2.85	2.75	2.65	2.50	4.25	3.90	3.50	3.40	3.30	3.05
	150 x 77	3.50	3.15	2.85	2.75	2.70	2.50	4.30	3.90	3.55	3.40	3.35	3.10
200	95 x 45	1.75	1.55	1.45	1.35	1.35	1.25	2.15	1.95	1.75	1.65	1.60	1.45
	95 x 47	1.75	1.60	1.45	1.40	1.35	1.25	2.20	2.00	1.80	1.70	1.65	1.45
	95 x 63	1.95	1.75	1.60	1.55	1.50	1.40	2.40	2.20	2.00	1.90	1.85	1.70
	95 x 65	1.95	1.80	1.60	1.55	1.50	1.40	2.45	2.20	2.00	1.95	1.90	1.75
	130 x 75	2.85	2.60	2.35	2.25	2.20	2.05	3.50	3.20	2.90	2.80	2.75	2.55
	130 x 77	2.85	2.60	2.35	2.25	2.20	2.05	3.55	3.25	2.95	2.80	2.75	2.55
	150 x 75	3.30	3.00	2.70	2.60	2.55	2.35	4.05	3.70	3.35	3.20	3.15	2.90
	150 x 77	3.30	3.00	2.75	2.60	2.55	2.40	4.10	3.75	3.40	3.25	3.20	2.95
300	95 x 45	1.60	1.45	1.30	1.25	1.25	1.15	2.00	1.80	1.60	1.50	1.45	1.30
	95 x 47	1.65	1.45	1.35	1.30	1.25	1.15	2.00	1.85	1.65	1.55	1.50	1.35
	95 x 63	1.80	1.65	1.50	1.40	1.40	1.30	2.25	2.00	1.85	1.75	1.70	1.55
	95 x 65	1.80	1.65	1.50	1.45	1.40	1.30	2.25	2.05	1.85	1.80	1.75	1.55
	130 x 75	2.60	2.40	2.15	2.05	2.05	1.90	3.25	2.95	2.70	2.55	2.50	2.30
	130 x 77	2.65	2.40	2.20	2.10	2.05	1.90	3.30	3.00	2.70	2.60	2.55	2.35
	150 x 75	3.05	2.75	2.50	2.40	2.35	2.20	3.75	3.40	3.10	3.00	2.90	2.65
	150 x 77	3.05	2.80	2.50	2.40	2.35	2.20	3.80	3.45	3.15	3.00	2.95	2.70



400	95 x 45	1.50	1.35	1.25	1.20	1.15	1.05	1.85	1.70	1.45	1.40	1.35	1.20
	95 x 47	1.50	1.40	1.25	1.20	1.15	1.10	1.90	1.70	1.50	1.40	1.35	1.20
	95 x 63	1.70	1.55	1.40	1.35	1.30	1.20	2.10	1.90	1.70	1.65	1.60	1.40
	95 x 65	1.70	1.55	1.40	1.35	1.30	1.20	2.10	1.90	1.75	1.65	1.60	1.45
	130 x 75	2.45	2.25	2.00	1.95	1.90	1.75	3.05	2.75	2.50	2.40	2.35	2.10
	130 x 77	2.50	2.25	2.05	1.95	1.90	1.80	3.10	2.80	2.55	2.45	2.40	2.15
	150 x 75	2.85	2.60	2.35	2.25	2.20	2.05	3.55	3.20	2.90	2.80	2.75	2.45
	150 x 77	2.85	2.60	2.35	2.25	2.20	2.05	3.55	3.25	2.95	2.80	2.75	2.50
500	95 x 45	1.40	1.30	1.15	1.10	1.10	1.00	1.75	1.60	1.35	1.30	1.25	1.10
	95 x 47	1.45	1.30	1.20	1.15	1.10	1.05	1.80	1.60	1.40	1.30	1.25	1.15
	95 x 63	1.60	1.45	1.30	1.25	1.25	1.15	2.00	1.80	1.60	1.50	1.45	1.30
	95 x 65	1.60	1.45	1.30	1.25	1.25	1.15	2.00	1.80	1.65	1.55	1.50	1.35
	130 x 75	2.35	2.10	1.90	1.85	1.80	1.65	2.90	2.60	2.40	2.30	2.20	2.00
	130 x 77	2.35	2.15	1.95	1.85	1.80	1.70	2.90	2.65	2.40	2.30	2.25	2.00
	150 x 75	2.70	2.45	2.20	2.15	2.10	1.95	3.35	3.05	2.75	2.65	2.55	2.30
	150 x 77	2.70	2.45	2.25	2.15	2.10	1.95	3.35	3.05	2.80	2.65	2.60	2.30
600	95 x 45	1.35	1.25	1.10	1.05	1.05	0.95	1.70	1.50	1.30	1.20	1.15	1.05
	95 x 47	1.35	1.25	1.15	1.10	1.05	1.00	1.70	1.50	1.30	1.25	1.20	1.05
	95 x 63	1.50	1.40	1.25	1.20	1.15	1.10	1.90	1.70	1.50	1.45	1.40	1.25
	95 x 65	1.55	1.40	1.25	1.20	1.20	1.10	1.90	1.75	1.55	1.45	1.40	1.25
	130 x 75	2.20	2.00	1.85	1.75	1.70	1.60	2.75	2.50	2.25	2.15	2.10	1.85
	130 x 77	2.25	2.05	1.85	1.75	1.75	1.60	2.80	2.50	2.30	2.20	2.10	1.90
	150 x 75	2.55	2.35	2.10	2.05	2.00	1.85	3.20	2.90	2.65	2.50	2.40	2.15
	150 x 77	2.60	2.35	2.15	2.05	2.00	1.85	3.20	2.90	2.65	2.50	2.45	2.15
1000	95 x 45	1.15	1.05	0.95	0.90	0.90	0.85	1.40	1.20	1.05	1.00	0.95	0.85
	95 x 47	1.20	1.10	1.00	0.95	0.90	0.85	1.45	1.25	1.10	1.00	1.00	0.85
	95 x 63	1.30	1.20	1.10	1.05	1.00	0.95	1.65	1.45	1.25	1.20	1.15	1.00
	95 x 65	1.35	1.20	1.10	1.05	1.05	0.95	1.65	1.45	1.25	1.20	1.15	1.05
	130 x 75	1.95	1.75	1.60	1.50	1.50	1.40	2.40	2.15	1.90	1.75	1.70	1.55
	130 x 77	1.95	1.75	1.60	1.55	1.50	1.40	2.40	2.20	1.90	1.80	1.75	1.55
	150 x 75	2.25	2.05	1.85	1.75	1.75	1.60	2.75	2.50	2.15	2.05	2.00	1.75
	150 x 77	2.25	2.05	1.85	1.80	1.75	1.60	2.80	2.55	2.20	2.05	2.00	1.80

ULTRALAM E12 CONCRETE FORMWORK BEARER SPAN TABLES

Table 2 below is for Ultralam E12 bearers supporting concrete formwork with a deflection criteria of Class III (span/270)

Concrete slab thickness (mm)	Ultralam E12 Member size (mm)	Ultralam E12 Bearer Spacing (mm)						Ultralam E12 Bearer Spacing (mm)					
		900	1200	1500	1800	2100	2400	900	1200	1500	1800	2100	2400
		Ultralam E12 Maximum Single Span (m)						Ultralam E12 Maximum Continuous Span (m)					
100	95 x 45	1.20	1.10	1.00	0.95	0.85	0.80	1.30	1.15	1.00	0.95	0.85	0.75
	95 x 47	1.20	1.10	1.00	0.95	0.90	0.80	1.35	1.15	1.05	0.95	0.85	0.80
	95 x 63	1.35	1.20	1.15	1.05	1.00	0.95	1.55	1.35	1.20	1.10	1.00	0.95
	95 x 65	1.35	1.25	1.15	1.05	1.00	0.95	1.60	1.40	1.25	1.10	1.05	0.95
	130 x 75	1.95	1.80	1.65	1.55	1.50	1.40	2.35	2.05	1.80	1.65	1.55	1.45
	130 x 77	2.00	1.80	1.65	1.55	1.50	1.40	2.40	2.05	1.85	1.70	1.55	1.45
	150 x 75	2.30	2.05	1.90	1.80	1.70	1.65	2.70	2.35	2.10	1.90	1.75	1.65
	150 x 77	2.30	2.10	1.95	1.80	1.75	1.65	2.75	2.40	2.15	1.95	1.80	1.70
150	95 x 45	1.15	1.05	0.95	0.85	0.80	0.75	1.25	1.05	0.95	0.85	0.75	0.70
	95 x 47	1.15	1.05	0.95	0.90	0.80	0.75	1.25	1.10	0.95	0.90	0.80	0.70
	95 x 63	1.25	1.15	1.05	1.00	0.95	0.90	1.45	1.25	1.15	1.05	0.95	0.90
	95 x 65	1.30	1.15	1.10	1.00	0.95	0.90	1.50	1.30	1.15	1.05	0.95	0.90
	130 x 75	1.85	1.70	1.55	1.45	1.40	1.35	2.20	1.90	1.70	1.55	1.45	1.35
	130 x 77	1.90	1.70	1.60	1.50	1.40	1.35	2.25	1.95	1.75	1.55	1.45	1.35
	150 x 75	2.15	1.95	1.80	1.70	1.60	1.55	2.55	2.20	1.95	1.80	1.65	1.55
	150 x 77	2.20	1.95	1.85	1.70	1.65	1.55	2.60	2.25	2.00	1.80	1.70	1.55
200	95 x 45	1.10	1.00	0.90	0.80	0.75	0.70	1.15	1.00	0.90	0.80	0.70	0.65
	95 x 47	1.10	1.00	0.90	0.85	0.75	0.70	1.20	1.05	0.90	0.80	0.75	0.65
	95 x 63	1.20	1.10	1.00	0.95	0.90	0.85	1.40	1.20	1.05	0.95	0.90	0.80
	95 x 65	1.20	1.10	1.05	0.95	0.90	0.85	1.40	1.20	1.10	1.00	0.90	0.85
	130 x 75	1.80	1.60	1.50	1.40	1.35	1.25	2.10	1.80	1.60	1.45	1.35	1.25
	130 x 77	1.80	1.60	1.50	1.40	1.35	1.30	2.10	1.80	1.65	1.50	1.35	1.30
	150 x 75	2.05	1.85	1.75	1.60	1.55	1.45	2.40	2.10	1.85	1.70	1.55	1.45
	150 x 77	2.05	1.90	1.75	1.65	1.55	1.50	2.45	2.10	1.90	1.70	1.60	1.50
300	95 x 45	1.00	0.90	0.80	0.75	0.70	0.65	1.05	0.90	0.80	0.70	0.60	0.55
	95 x 47	1.00	0.90	0.85	0.75	0.70	0.65	1.10	0.95	0.80	0.70	0.65	0.60
	95 x 63	1.10	1.00	0.95	0.90	0.80	0.75	1.25	1.10	0.95	0.85	0.80	0.70
	95 x 65	1.15	1.00	0.95	0.90	0.80	0.75	1.25	1.10	1.00	0.90	0.80	0.70
	130 x 75	1.65	1.50	1.35	1.30	1.20	1.15	1.90	1.65	1.45	1.30	1.20	1.10
	130 x 77	1.65	1.50	1.40	1.30	1.25	1.15	1.90	1.65	1.45	1.35	1.25	1.15
	150 x 75	1.90	1.70	1.60	1.50	1.40	1.30	2.15	1.90	1.70	1.55	1.40	1.30
	150 x 77	1.90	1.75	1.60	1.50	1.45	1.35	2.20	1.90	1.70	1.55	1.45	1.30

400	95 x 45	0.95	0.85	0.75	0.70	0.65	0.60	0.95	0.80	0.70	0.60	0.55	0.50
	95 x 47	0.95	0.85	0.75	0.70	0.65	0.60	1.00	0.85	0.70	0.65	0.55	0.50
	95 x 63	1.05	0.95	0.85	0.80	0.75	0.70	1.15	1.00	0.90	0.75	0.70	0.65
	95 x 65	1.05	0.95	0.90	0.80	0.75	0.70	1.15	1.00	0.90	0.80	0.70	0.65
	130 x 75	1.55	1.40	1.30	1.20	1.10	1.05	1.75	1.50	1.35	1.20	1.10	1.00
	130 x 77	1.55	1.40	1.30	1.20	1.15	1.05	1.75	1.50	1.35	1.25	1.10	1.00
	150 x 75	1.80	1.60	1.50	1.40	1.30	1.20	2.00	1.75	1.55	1.40	1.25	1.15
	150 x 77	1.80	1.65	1.50	1.40	1.30	1.25	2.05	1.75	1.55	1.45	1.30	1.15
500	95 x 45	0.90	0.80	0.70	0.65	0.60	0.55	0.90	0.75	0.65	0.55	0.50	0.45
	95 x 47	0.90	0.80	0.70	0.65	0.60	0.55	0.90	0.75	0.65	0.55	0.50	0.50
	95 x 63	1.00	0.90	0.80	0.75	0.70	0.65	1.05	0.90	0.80	0.70	0.65	0.55
	95 x 65	1.00	0.90	0.85	0.75	0.70	0.65	1.10	0.95	0.80	0.70	0.65	0.60
	130 x 75	1.45	1.30	1.20	1.15	1.05	1.00	1.60	1.40	1.25	1.10	1.00	0.90
	130 x 77	1.45	1.35	1.25	1.15	1.05	1.00	1.65	1.40	1.25	1.10	1.00	0.90
	150 x 75	1.70	1.50	1.40	1.30	1.20	1.15	1.85	1.60	1.45	1.25	1.15	1.05
	150 x 77	1.70	1.55	1.45	1.35	1.25	1.15	1.90	1.65	1.45	1.30	1.15	1.05
600	95 x 45	0.85	0.75	0.65	0.60	0.55	0.50	0.85	0.65	0.60	0.50	0.45	0.45
	95 x 47	0.85	0.75	0.65	0.60	0.55	0.50	0.85	0.70	0.60	0.55	0.50	0.45
	95 x 63	0.95	0.85	0.75	0.70	0.65	0.60	1.00	0.85	0.75	0.65	0.60	0.55
	95 x 65	0.95	0.85	0.80	0.70	0.65	0.60	1.00	0.90	0.75	0.65	0.60	0.55
	130 x 75	1.40	1.25	1.15	1.05	1.00	0.90	1.50	1.30	1.15	1.00	0.90	0.80
	130 x 77	1.40	1.25	1.15	1.10	1.00	0.95	1.55	1.30	1.15	1.00	0.90	0.85
	150 x 75	1.60	1.45	1.35	1.25	1.15	1.05	1.75	1.50	1.30	1.15	1.05	0.95
	150 x 77	1.60	1.45	1.35	1.25	1.15	1.05	1.75	1.55	1.35	1.20	1.05	0.95
1000	95 x 45	0.70	0.60	0.55	0.50	0.45	0.40	0.65	0.50	0.45	0.40	0.40	0.35
	95 x 47	0.70	0.60	0.55	0.50	0.45	0.40	0.65	0.55	0.45	0.40	0.40	0.35
	95 x 63	0.80	0.70	0.65	0.60	0.55	0.50	0.80	0.65	0.55	0.50	0.45	0.45
	95 x 65	0.80	0.70	0.65	0.60	0.55	0.50	0.80	0.65	0.55	0.50	0.45	0.45
	130 x 75	1.20	1.05	0.95	0.85	0.80	0.75	1.25	1.00	0.85	0.75	0.70	0.65
	130 x 77	1.20	1.10	0.95	0.90	0.80	0.75	1.25	1.05	0.90	0.80	0.70	0.65
	150 x 75	1.40	1.25	1.10	1.00	0.95	0.85	1.45	1.15	1.00	0.90	0.80	0.75
	150 x 77	1.40	1.25	1.10	1.00	0.95	0.90	1.45	1.20	1.00	0.90	0.85	0.75

Notes:

1. Member deflections are limited to span/270 (Class III formwork limit in accordance with AS 3610.1-2010). However, this does not guarantee compliance with Class III criteria since other components outside the scope of this table contribute to the form face deflection.
2. Spans allow for a stacked materials loading of 4 kPa.
3. Members are assumed to have a moisture content <15%. The span table shall not be relied upon where members are used in a wet condition (moisture content >15%). For moisture contents > 15% designers must incorporate the deformation factor (j₂) from AS1720.1-2010.
4. Interpolation of spans for intermediate concrete thicknesses is permitted. Extrapolation is not permitted.
5. Continuous span members includes 2 or more equally spaced spans with uniformly distributed loading.

BUILD SAFELY

MLT Ltd. are committed to work safely and want to remind you to do the same. We encourage you to follow recommendations regarding:



Personal protective equipment for hands, feet, head and eyes



Fall protection



Product performance specification

STORAGE AND HANDLING RECOMMENDATIONS



Keep LVL formwork beams in dry and well ventilated area



Re-seal cut edges with acrylic paint



Wet members and sheets should have spacers between layers to allow to dry out



Do not use LVL formwork beams over spans greater than those recommended in present brochure





CERTIFICATES



Certificate



Annex B: Scope of MLT Ltd FSC™ Chain of Custody and Controlled Wood Certificate
NC-COC-014124

No	Site Name	Address	Sub-code
1	MLT Ltd subsidiary	96-A, Stantskaya st. 172011 Torzhok Tver oblast Russian Federation	--
2	MLT Ltd subsidiary 2	62V 172011 Sennovskoe Tver oblast Russian Federation	--



NEPCON hereby confirms that the Chain of Custody and Controlled Wood system of

MLT Ltd

14A, Bolshaya Morskaya st.
121 189 St. Petersburg
Russian Federation

has been assessed and certified as meeting the requirements of
FSC-STD-40-004 V2-1; FSC-STD-40-005 V2-1; FSC-STD-50-001 V1-2

The certificate is valid from 24-07-2014 to 23-07-2019
Certificate version date: 24-11-2016

Scope of certificate
Certificate type: Single Chain of Custody and Controlled Wood
Certificate registration code
NC-COC-014124
NC-CW-014124
FSC License Code
FSC-C020184

Jaroslav Jankovits
Conditions Director
Fiscocert 31, Tams
Eszona

Specific information regarding products and sites is listed in the appendix(es) of this certificate. The validity and exact scope covered by this certificate shall always be verified at www.info.fsc.org.

This certificate itself does not constitute evidence that particular product supplied by the certificate holder is FSC™ certified for FSC Controlled Wood. Products offered, shipped or sold by the certificate holder can only be considered covered by the scope of this certificate when the required FSC claim is clearly stated on invoices and shipping documents. The physical printed certificate remains the property of NEPCON and shall be returned upon request.
Certificate version date: 24-11-2016 Page 3

FSC™ A000335 (The mark of responsible forestry) www.fsc.org
This certificate itself does not constitute evidence that particular product supplied by the certificate holder is FSC™ certified for FSC Controlled Wood. Products offered, shipped or sold by the certificate holder can only be considered covered by the scope of this certificate when the required FSC claim is clearly stated on invoices and shipping documents. The physical printed certificate remains the property of NEPCON and shall be returned upon request.
Certificate version date: 24-11-2016 Page 2 of 3

Annex A: Scope of MLT Ltd FSC™ Chain of Custody and Controlled Wood Certificate
NC-COC-014124

Product Type	Trade Name	Output FSC Claims
W19	Core	FSC 100%; FSC Controlled Wood
W3.1	Wood chips	FSC 100%; FSC Controlled Wood
W2.6	Wood pellets	FSC 100%; FSC Controlled Wood
W3.2.3	OSB	FSC 100%; FSC Controlled Wood
W9.2	Laminated Veneer Lumber (ultralam)	FSC 100%; FSC Controlled Wood

This certificate itself does not constitute evidence that particular product supplied by the certificate holder is FSC™ certified for FSC Controlled Wood. Products offered, shipped or sold by the certificate holder can only be considered covered by the scope of this certificate when the required FSC claim is clearly stated on invoices and shipping documents. The physical printed certificate remains the property of NEPCON and shall be returned upon request.
Certificate version date: 24-11-2016 Page 2 of 3



STANDARDSMARK LICENCE

SAI Global hereby grants:
Modern Lumber Technologies Ltd.

14, Bolshaya Morskaya Street, Saint Petersburg, Russian Federation

And
96-A Stantskaya Street, Torzhok, Russian Federation

StandardsMark Licence

Manufactured for:
AS/NZS 4357.0:2005 - Structural laminated veneer lumber - Specifications

"The StandardsMark Licensee" the right to use the STANDARDSMARK as shown below only in respect of the goods described and detailed in the Schedule which are produced by the Licensee or on behalf of the Licensee and which comply with the appropriate Standard referred to above as from time to time amended. The Licence is granted subject to the rules governing the use of the STANDARDSMARK and the Terms and Conditions for certification and licence. The Licensee covenants to comply with all the Rules and Terms and Conditions.

Licence No: SMK40289
Issued: 31 May 2017
Expires: 30 October 2019

Originally Certified: 31 October 2014
Current Certification: 31 May 2017

N. Graham

Nicole Graham
General Manager SAI Global Certification Services



* For details of manufacture, refer to the licensee
The STANDARDSMARK is a registered certification trademark of SAI Global Limited (A.C.N. 069 844 842) and is issued under licence by SAI Global Certification Services Pty Limited (A.C.N. 108 716 688) (SAI Global) 688 George Street, Sydney NSW 2000, GPO Box 5420 Sydney NSW 2001. This certificate remains the property of SAI Global and must be returned to SAI Global upon its request. Refer to www.sai-global.com, for the list of product models.



SCHEDULE TO
STANDARDSMARK LICENCE

SAI Global hereby grants:
Modern Lumber Technologies Ltd.
14, Bolshaya Morskaya Street, Saint Petersburg, Russian Federation

And
96-A Stantskaya Street, Torzhok, Russian Federation

StandardsMark Licence

Manufactured for:
AS/NZS 4357.0:2005 - Structural laminated veneer lumber - Specifications

Model identification of the goods on which the STANDARDSMARK may be used:

Product	Model	Standard	Material	Grade	Thickness	Width	Length	Weight	Volume	Surface Area	Volume Weight	Surface Area Weight	Volume Weight	Surface Area Weight	Volume Weight	Surface Area Weight	Volume Weight	Surface Area Weight
W19	Core	AS/NZS 4357.0:2005	Core	Core	18mm	1200mm	4000mm	720kg	28.8m³	4800m²	160kg/m³	160kg/m²	160kg/m³	160kg/m²	160kg/m³	160kg/m²	160kg/m³	160kg/m²
W3.1	Wood chips	AS/NZS 4357.0:2005	Wood chips	Wood chips	10mm	100mm	4000mm	400kg	16m³	4000m²	100kg/m³	100kg/m²	100kg/m³	100kg/m²	100kg/m³	100kg/m²	100kg/m³	100kg/m²
W2.6	Wood pellets	AS/NZS 4357.0:2005	Wood pellets	Wood pellets	6mm	100mm	4000mm	240kg	9.6m³	4000m²	120kg/m³	120kg/m²	120kg/m³	120kg/m²	120kg/m³	120kg/m²	120kg/m³	120kg/m²
W3.2.3	OSB	AS/NZS 4357.0:2005	OSB	OSB	18mm	1200mm	4000mm	1080kg	43.2m³	4800m²	180kg/m³	180kg/m²	180kg/m³	180kg/m²	180kg/m³	180kg/m²	180kg/m³	180kg/m²
W9.2	Laminated Veneer Lumber (ultralam)	AS/NZS 4357.0:2005	Laminated Veneer Lumber (ultralam)	Laminated Veneer Lumber (ultralam)	18mm	1200mm	4000mm	1080kg	43.2m³	4800m²	180kg/m³	180kg/m²	180kg/m³	180kg/m²	180kg/m³	180kg/m²	180kg/m³	180kg/m²

End of Record

Licence No: SMK40289

Issued Date: 31 May 2017

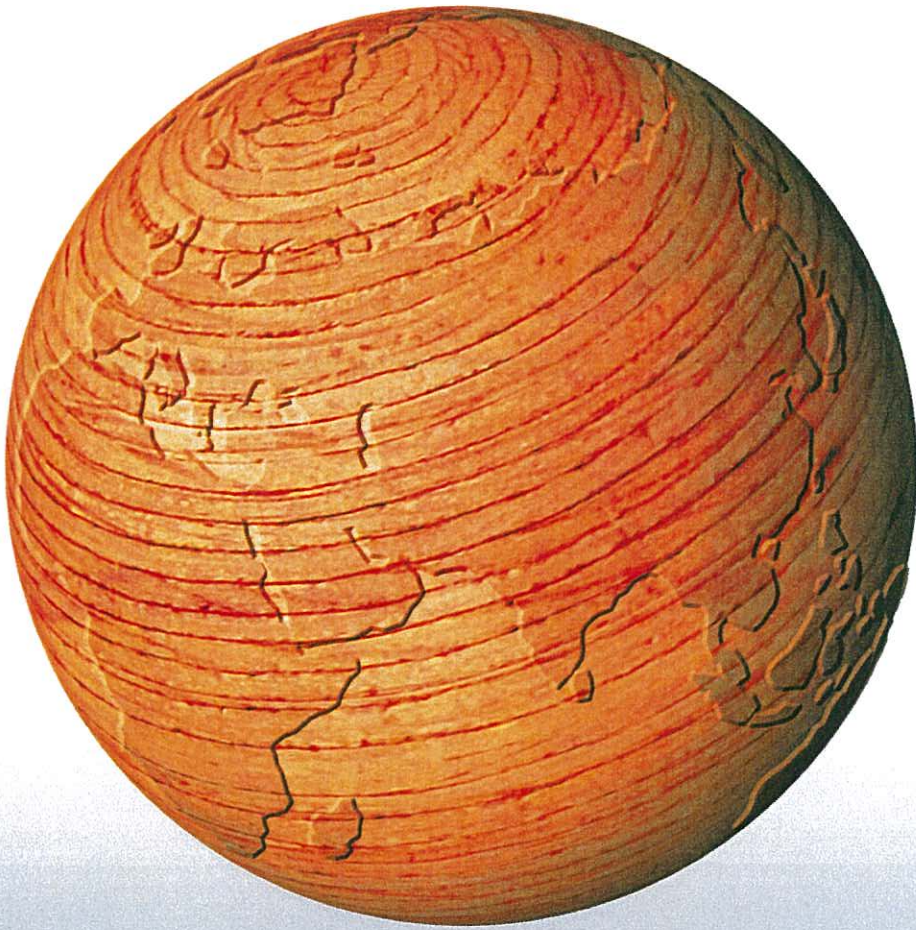
This schedule supersedes all previously issued schedules



* For details of manufacture, refer to the licensee
The STANDARDSMARK is a registered certification trademark of SAI Global Limited (A.C.N. 069 844 842) and is issued under licence by SAI Global Certification Services Pty Limited (A.C.N. 108 716 688) (SAI Global) 688 George Street, Sydney NSW 2000, GPO Box 5420 Sydney NSW 2001. This certificate remains the property of SAI Global and must be returned to SAI Global upon its request. Refer to www.sai-global.com, for the list of product models.



ULTRALAM LVL FORMWORK SOLUTIONS



Modern Lumber Technology Ltd. (MLT Ltd.)

Head office

14-A, Bolshaya Morskaya Str.,
191186, Saint-Petersburg, Russia

Phone Int'Sales +7 812 612 0899

Ph/Fax +7 812 571 6164

E-mail sales@mltlvl.com
www.ultralam.com